

SMALL CHANGES, BIG IMPACT WITH GROHE QUICKFIX



Home improvement is a new lifestyle

SOFT RENOVATIONS & REPLACEMENTS EASY AS PIE

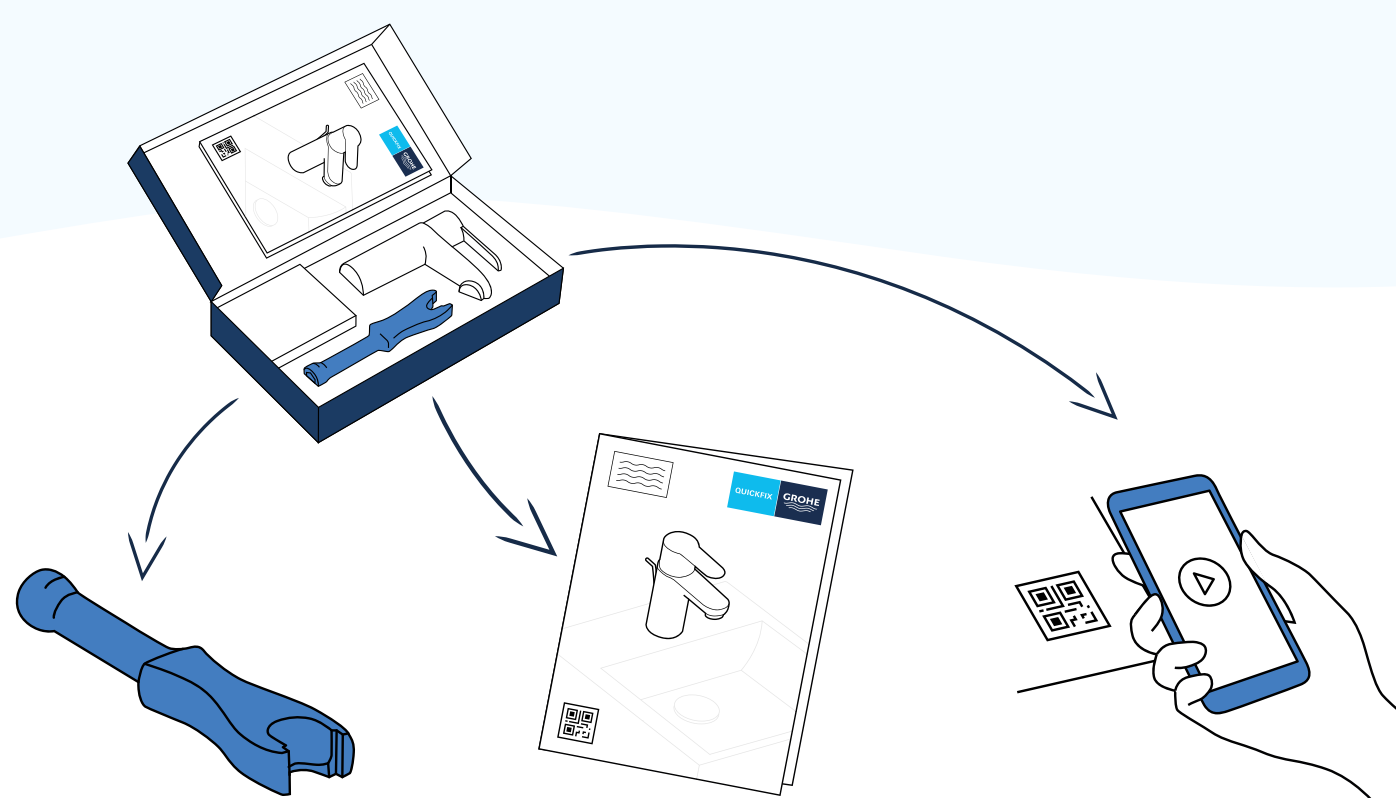
Home improvements have evolved from a mere trend to a lifestyle choice for the young and old. In the past years, a wave of make-overs went through homes around the world. But what about that old dripping faucet? When it comes to soft renovations or replacements, people often stop at the bathroom or kitchen door. But also here it doesn't have to be complicated, as proven by GROHE QuickFix. The sub-brand offers a surprisingly easy solution for fulfilling smaller but visually effective home upgrades: With GROHE QuickFix, DIY dreams in the kitchen and bathroom now become a reality.



Surprisingly easy

EVERYTHING IN ONE BOX WITH GROHE QUICKFIX

Everyone knows the struggle when it comes to home improvements: The search for the right product, missing tools and incomplete or complicated instructions can sometimes be really annoying. But this is now a thing of the past thanks to GROHE QuickFix! All products with a full QuickFix promise come with three main benefits in one box.



QuickTool: For example, the handy QuickTool combines all the conventional tools needed for easy installation and maintenance of a GROHE QuickFix tap.

QuickGuide: The QuickGuide includes self-descriptive pictures and short texts for clear and explicit guidance – no chance of misunderstandings.

QuickVideos: Videos preferred? Easy to understand how-tos can be retrieved via QR code.

You will never craft alone

GROHE'S FULL-SERVICE APPROACH

GROHE QuickFix is all about empowering consumers – and being there when they need assistance. For the products in the GROHE Start bath and kitchen series, the comprehensive care package is completed by a warranty extension from five to six years by easily registering the product.



Easy bathroom and kitchen make-overs

LET'S START WITH GROHE START



The GROHE Start faucet is the perfect partner when it comes to DIY projects at home. Popular styles and the latest trends can be easily finished. Aiming for the **scandi** look? The ultimate classic for interior can be achieved by warm and natural design choices. To enhance a **clean-minimalistic** look, however, smooth, clean surfaces and minimal patterns can be added. The vibrant **urban jungle** interior trend will shine with fun animal motives and plants while the **green sustainable** look is filled with natural and reusable materials.

GROHE Start fits every style perfectly no matter the preference!

Simple upgrades can make a room shine with new splendor without much effort. For example, swapping the faucet in the bathroom or kitchen can instantly make a big difference. This is where GROHE Start comes into play: A versatile yet modern range of washbasin faucets in different sizes.

For a harmonious design concept throughout a flat or a house, GROHE Start is also available as a kitchen line. The slim and contemporary design of the faucets contributes to making every-day kitchen routines easier and more enjoyable.

Sustainability without compromises

RESOURCE-SAVING TECHNOLOGIES

The integrated GROHE EcoJoy technology reduces the water flow while enriching the water with air. Thereby, it ensures a perfect, voluminous flow and at the same time saves valuable resources. Thus, the products in the GROHE Start bath series make a direct contribution to a sustainable future without compromising on design.



GROHE SilkMove ES is the intelligent combination of energy-saving and effortless water control. In the mid-lever position only cold water is provided. This prevents unnecessary hot water consumption, saving precious energy.¹



¹ This feature is only integrated in specific Start product variants.



The **GROHE QuickFix Glue or Screw** accessories are a perfect match for faucets from the **GROHE QuickFix** portfolio. From robe hooks, toilet brush sets, soap dispensers to towel rails or rings – the broad range allows easy bathroom touch ups without drilling!

For detailed information about GROHE QuickFix, please visit the following [LINK](#). To download high-resolution images please use the following [LINK](#).

GROHE
Feldmühleplatz 15 | 40545 Düsseldorf | Germany
Phone: +49 (0) 211/9130-3030 | www.grohe-x.com

MEDIA CONTACT
Sarah Bagherzadegan | Leader, Brand Communications, LIXIL EMENA
E-Mail: media@grohe.com

PART OF **LIXIL**