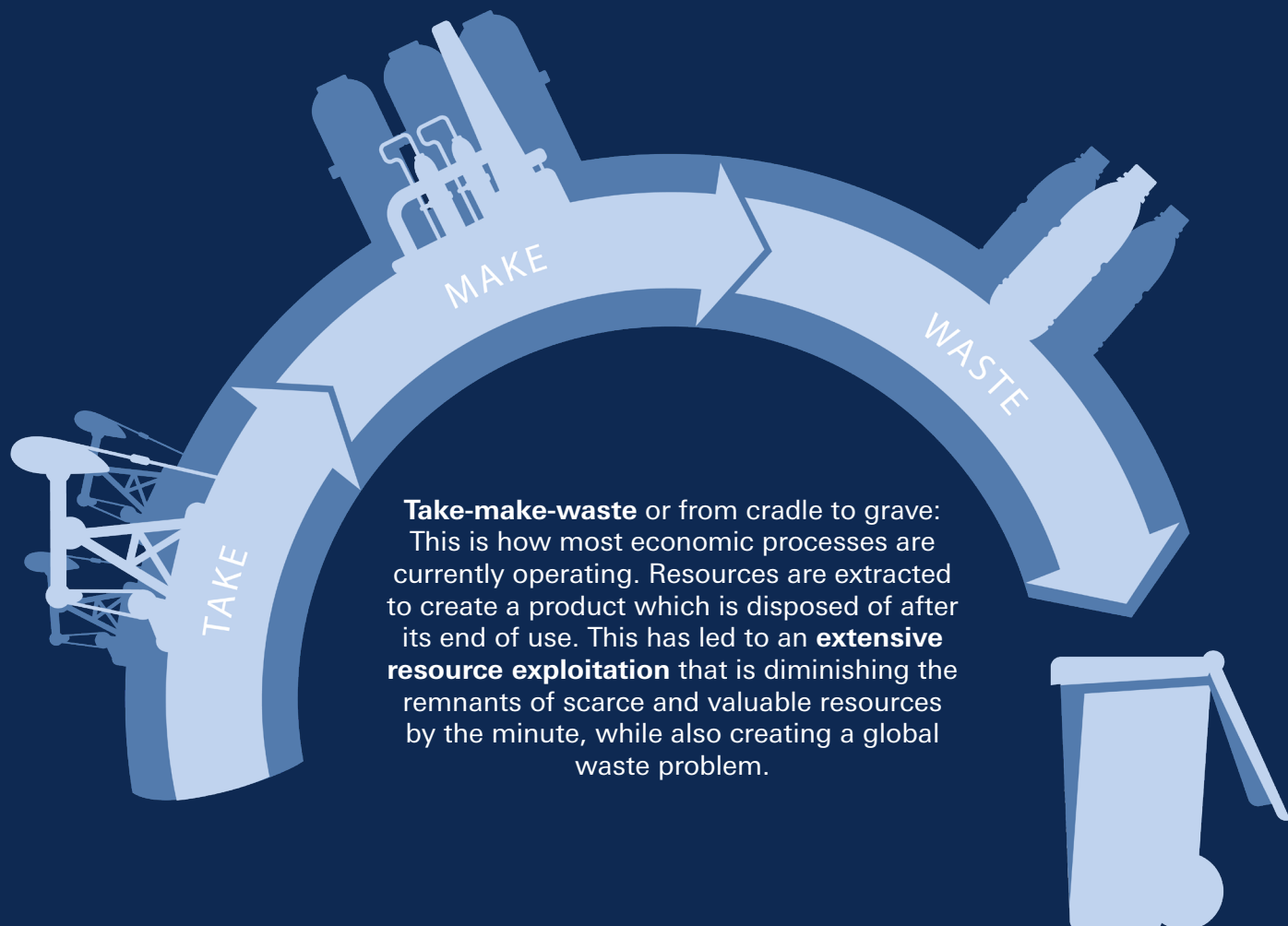
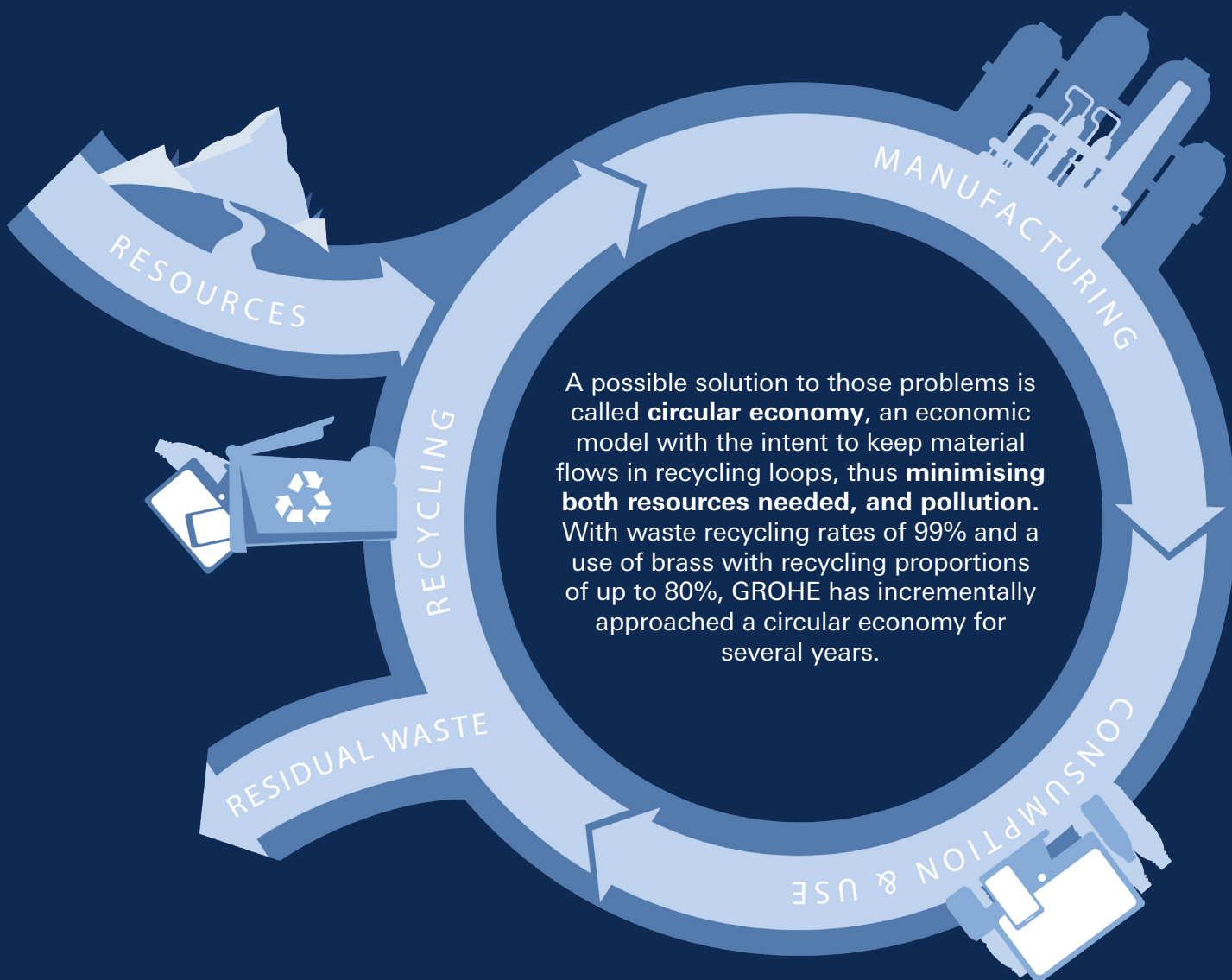


CIRCULAR ECONOMY AT GROHE

**SUSTAINABILITY IS THE FUTURE –
REDUCING RESOURCE CONSUMPTION AND
POLLUTION FOR A HEALTHY PLANET AND SOCIETY**



**AIMING FOR A WORLD WITHOUT WASTE –
CIRCULAR ECONOMY AT GROHE**



ULTIMATE SUSTAINABILITY WITH GROHE'S FIRST CRADLE TO CRADLE CERTIFIED® PRODUCTS

This circular model is the basis for the Cradle to Cradle® design concept. Here products are designed and manufactured with the intent of using its components in its end-of-life-phase for the creation of new products.

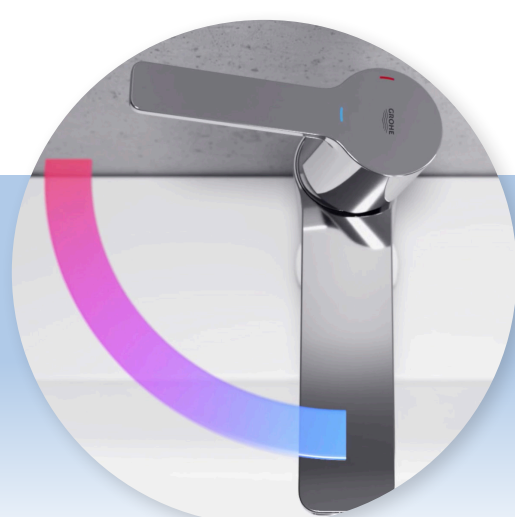
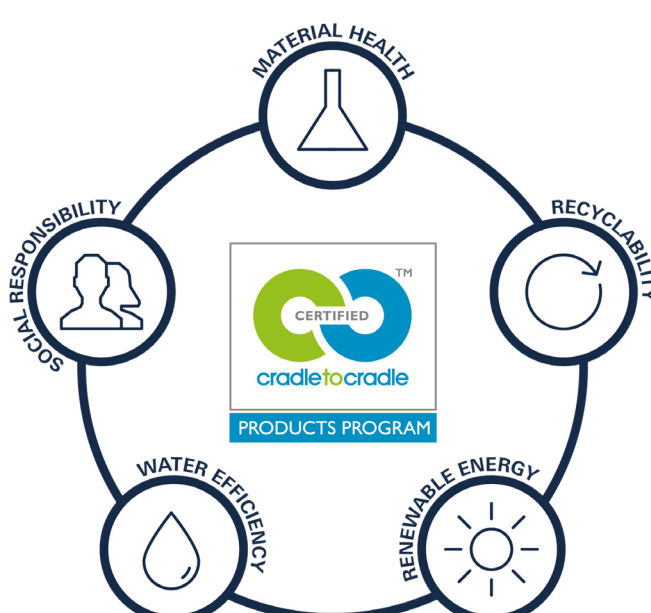
GROHE has launched four best-selling products as *Cradle to Cradle Certified®* variants, which achieved the Gold Product Standard.



The *Cradle to Cradle Certified®* Product Standard is the world's leading science-based and rigorous norm for designing and manufacturing safe, circular and responsible materials and products. Find more information [here](#).

To achieve a certification, a product is evaluated in terms of the following five categories: material health, material reutilisation, renewable energy, water stewardship, and social fairness.

Each product is then designated a level of achievement: basic, bronze, silver, gold, or platinum.



Further reduction of a buildings' carbon footprint:
The sustainability benefit of the three taps is enhanced with the SilkMove ES technology, where ES stands for energy-saving. The technology prevents the unnecessary use of hot water by supplying only cold water when the tap lever is in the middle position.

Emissions from buildings and construction constitute almost 40% of global carbon emissions*.

*European Commission, 2020

Find more information about GROHE's sustainability engagement on www.green.grohe.com

GROHE

World Business Centre 2 | Newall Road |
London Heathrow Airport | Hounslow | Middlesex | TW6 2SF
Phone: 0208 283 2840 | www.grohe.co.uk

MEDIA CONTACT

Jasmine Burford | DMC PR
E-Mail: jasmine@dmcpr.co.uk